

MONTHLY INDICATORS REPORT

Summary of Connecticut Criminal Justice System Trends

Key Metrics

(Percent change from prior month)

November Monthly Totals

Criminal Arrests:
 7,487 ↓ (-5.3%)

Lock-up Arraignments:
 2,423 ↓ (-17.0%)

DOC Admissions:
 1,336 ↓ (-14.5%)

DOC Releases & Discharges:
 763 ↓ (-10.2%)

December 1 Counts

DOC Facility:
 10,896 ↔ (+0.1%)

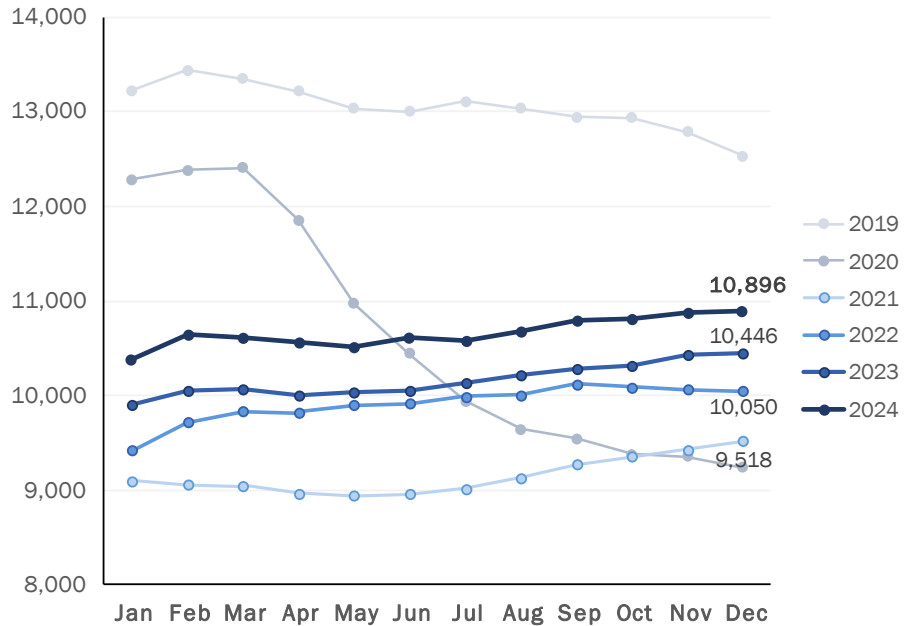
Pretrial:
 3,791 ↔ (+0.7%)

Sentenced:
 6,765 ↔ (-0.2%)

DOC Community Supervision:
 3,010 ↔ (-0.6%)

First-of-the-Month DOC Facility Population

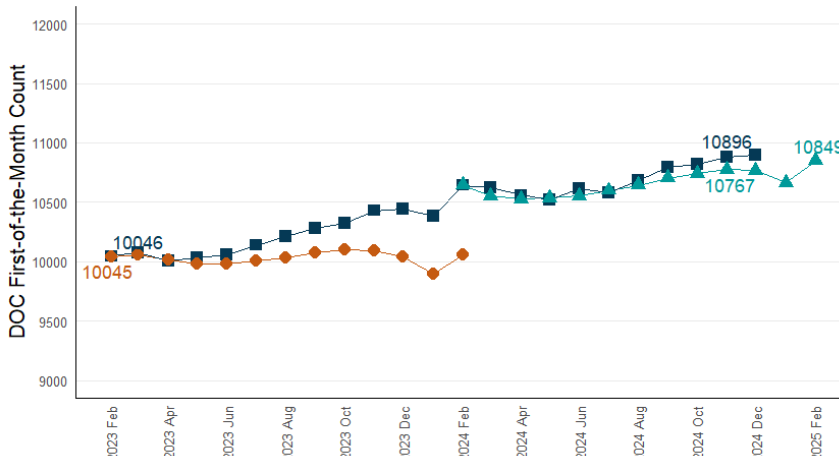
A comparison of up to five years shown by month



Note: To better illustrate changes, the Y-axis does not begin at zero.

Correction Population Forecast

Forecast period: March 2024 – February 2025



Note: To better illustrate changes, the Y-axis does not begin at zero.

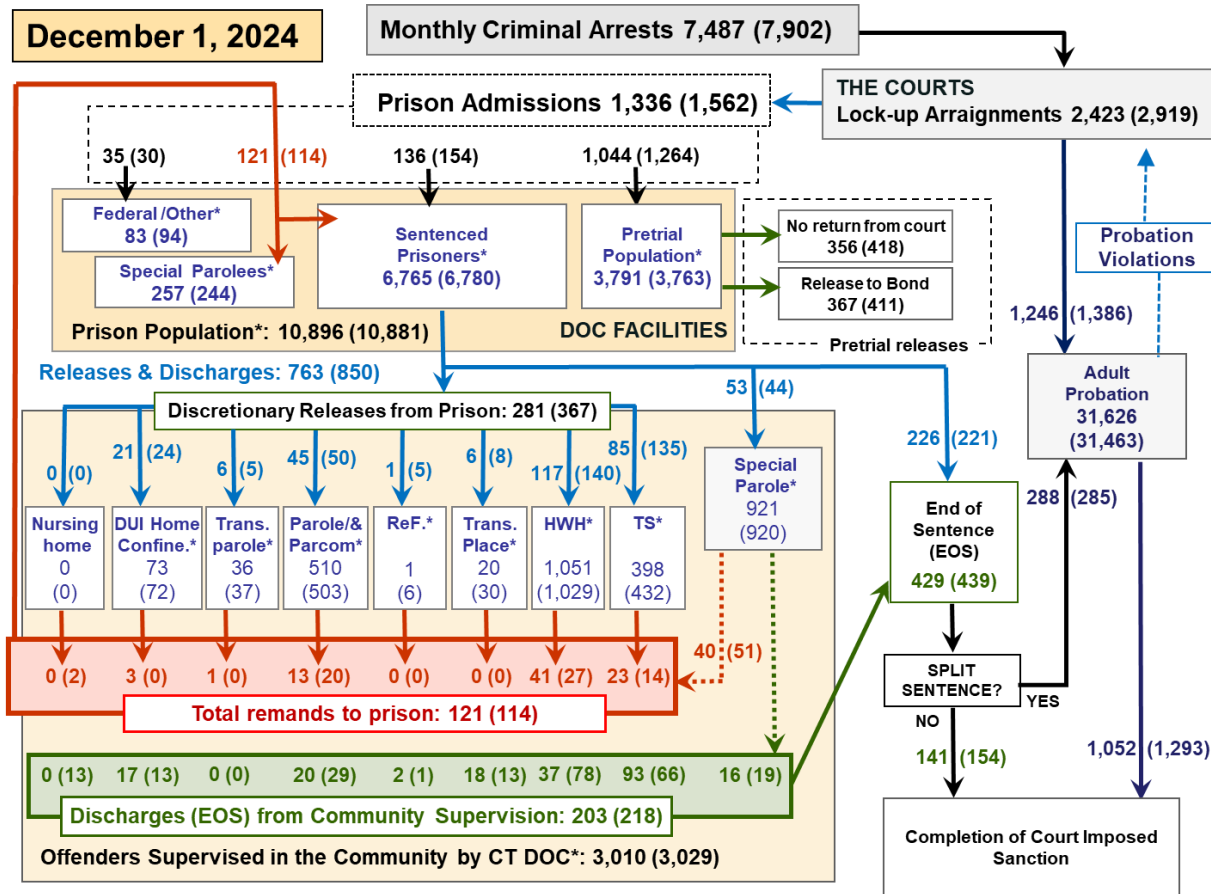
WEEK OF DECEMBER 1, 2024

- **OPM Population Estimate:**
10,767
- **DOC Facility Count:**

December 1	10,896
First Week Avg.	10,899
- **Difference from OPM Forecast:**
 - First of the Month +129 +1.2%
 - First Week Avg. +132 +1.2%

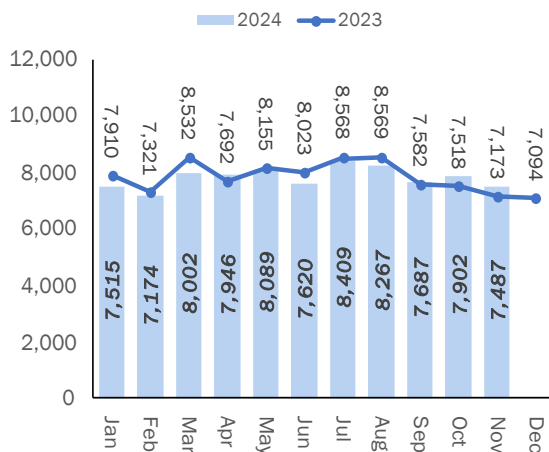


Criminal Justice System Monthly Counts & Flow Chart



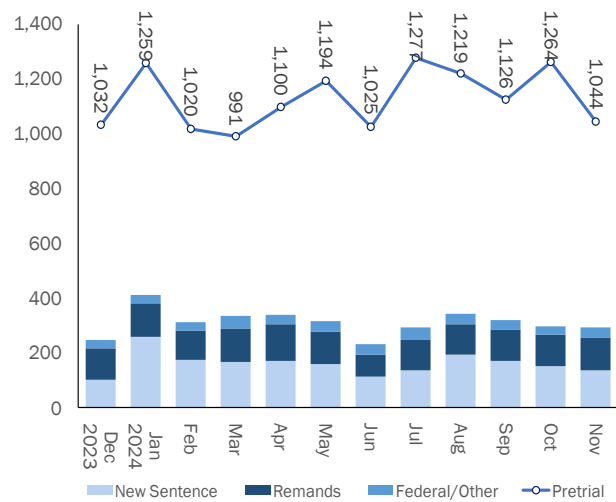
This flowchart contains monthly operations data for November 2024 and daily counts reported on December 1, 2024. Asterisks (*) indicate the daily count on December 1. Figures from last month are enclosed by parentheses.

Statewide Arrests: 2023 & 2024



Note: Data in the chart above show new case starts in the state Criminal Motor Vehicle System (CRMVS).

Monthly DOC Admissions: 2023 & 2024

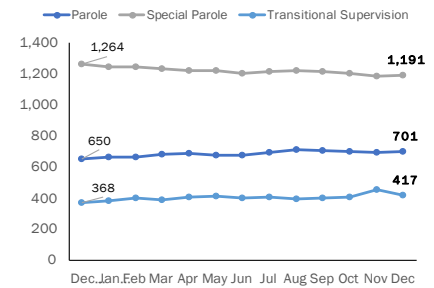


Department of Correction

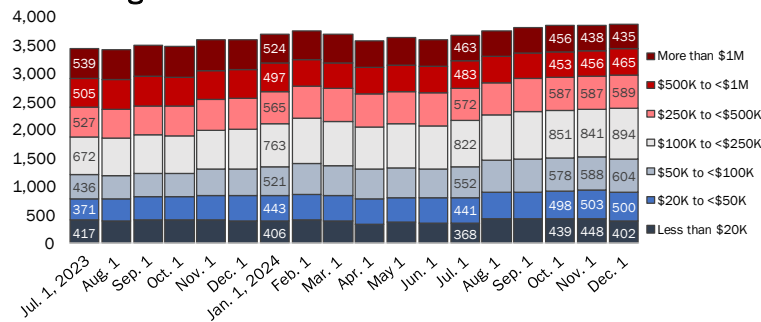
First-of-the-Month Totals

	2024 Oct. 1	2024 Nov. 1	2024 Dec. 1	2023 Dec. 1	% Change	
					Monthly	Annual
DOC Facilities						
Federal/Other	91	94	83	88	-11.7%	-5.7%
Sentenced	6,771	6,780	6,765	6,614	-0.2%	2.3%
Special Parole	234	244	257	229	5.3%	12.2%
Pretrial	3,723	3,763	3,791	3,515	0.7%	7.9%
Total	10,819	10,881	10,896	10,446	0.1%	4.3%
DOC Community						
Transfer Parole	39	37	36	30	-2.7%	20.0%
Parole/ Parcom Total	520	503	510	496	1.4%	2.8%
Parole	395	379	385	373	1.6%	3.2%
Parcom @ CT	125	124	125	123	0.8%	1.6%
Furlough	2	6	1	2	-83.3%	-50.0%
Trans Placement	35	30	20	22	-33.3%	-9.1%
DUI/Home confine.	70	72	73	71	1.4%	2.8%
Halfway House Total	1,027	1,029	1,051	1,014	2.1%	3.6%
Comm Release	546	548	567	535	3.5%	6.0%
Transitional Supervision	21	22	19	19	-13.6%	0.0%
Parole	182	189	191	154	1.1%	24.0%
Transfer Parole	5	3	4	11	33.3%	-63.6%
Special Parole	273	267	270	295	1.1%	-8.5%
Transitional Supervision	384	432	398	349	-7.9%	14.0%
Nursing home	0	0	0	0	-	-
Special Parole	928	920	921	969	0.1%	-5.0%
Total	3,005	3,029	3,010	2,953	-0.6%	1.9%

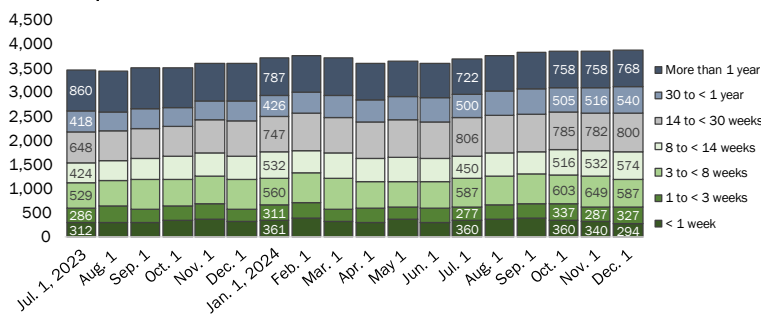
DOC Community Supervision: First-of-the-Month Totals



Bond Ranges for Pretrial Detainees



Pretrial, Weeks Held since Admission



Judicial Branch Court Support Services Division

The Jail Reinterview Program

	Pretrial admissions	Offender interviews	Offenders released	Released last year
SEP	1,126	1,069	256	253
OCT	1,264	1,238	272	252
NOV	1,044	837	264	231

Pretrial Bail and Probation Caseload

	Pretrial bail case starts	Client supv. starts	Split sentence starts	Pretrial bail cases*
SEP		1,386	289	
OCT		1,527	285	
NOV '24		1,246	288	
NOV '23	2,408	1,219	290	13,257

* Reflects open cases as of the first of the month.

Ed. Note: Pretrial bail case starts and cases unavailable at the time of publication and will be updated in the future.



Department of Correction

Monthly Totals

	2024	2024	2024	2023	% Change	
	SEP	OCT	NOV	NOV	Monthly	Annual
Admissions						
Federal/Other	37	30	35	34	16.7%	2.9%
Remands	115	114	121	116	6.1%	4.3%
DUI	3	2	3	6	50.0%	-50.0%
Transfer Parole	0	0	1	1	-	0.0%
Parole	16	20	13	21	-35.0%	-38.1%
Trans Plac/Furlough	1	0	0	0	-	-
Halfway House	42	27	41	44	51.9%	-6.8%
Transitional Supervision	17	14	23	12	64.3%	91.7%
Special Parole	36	51	40	32	-21.6%	25.0%
New Sentence	170	154	136	172	-11.7%	-20.9%
Violation of Parole	51	52	42	44	-19.2%	-4.5%
Pretrial	1,126	1,264	1,044	1,068	-17.4%	-2.2%
Total	1,448	1,562	1,336	1,390	-14.5%	-3.9%
Releases and discharges						
Transfer Parole	7	5	6	6	20.0%	0.0%
Parole	39	50	45	43	-10.0%	4.7%
Furlough	2	5	1	1	-80.0%	0.0%
Trans. Placement	14	8	6	5	-25.0%	20.0%
Home Confinement DUI	26	24	21	24	-12.5%	-12.5%
Halfway House	147	140	117	129	-16.4%	-9.3%
Transitional Supervision	101	135	85	100	-37.0%	-15.0%
Special Parole	45	44	53	78	20.5%	-32.1%
Nursing home	0	0	0	0	-	-
End of Sentence	428	439	429	426	-2.3%	0.7%
Total	809	850	763	812	-10.2%	-6.0%
Pretrial Releases*						
From Court	393	418	356	362	-14.8%	-1.7%
Release to Bond	350	411	367	360	-10.7%	1.9%

* Totals reflect events, not individual offenders

Pretrial Admissions, New to DOC:

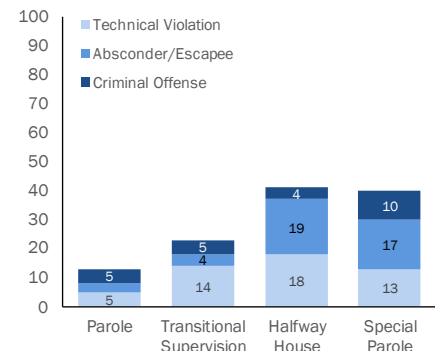
	SEP 2024	OCT 2024	NOV 2024	NOV 2023
Arraignments	2,647	2,919	2,423	2,475
Pretrial Admits	1,126	1,264	1,044	1,068
New to DOC	284	323	279	316
% New	25%	26%	27%	30%

DOC Community Release

Case Reviews and Release Metrics

	Cases reviewed	Approved	Denied	Continued	Approval rate
SEP	502	246	35	106	49%
OCT	605	326	53	120	54%
NOV '24	444	226	38	92	51%
NOV '23	519	275	27	113	53%

Remands from Community Release



Board of Pardons and Paroles

Parole Hearings

	Parole hearings	Paroles granted	Grant rate	Granted: prior year	Granted: two years prior
SEP	82	46	56%	46	27
OCT	84	34	40%	50	67
NOV	92	49	53%	56	48

Pardon Decisions

	Absolute Pardon			Cert. of Employability			Commutations		
	Granted	Denied	%	Granted	Denied	%	Granted	Denied	%
SEP	118	6	95%	4	0	100%	0	1	0%
OCT	110	6	95%	6	0	100%	0	0	0%
NOV '24	118	16	88%	3	0	100%	0	0	0%

Other BOPP Actions

	Reparole from revocation	Early Termination		Special parole discharges	Transfer parole approvals
		Discretionary parole	Special parole		
SEP	30	1	6	7	6
OCT	36	5	3	16	5
NOV '24	31	1	5	17	6
NOV '23	46	5	10	14	15

Monthly data sources: CRMVS via CJIS (arrests), JB CSSD (court and probation figures), BOPP and the DOC.

This report produced by the [Criminal Justice Policy & Planning Division Research Unit](#) at:

The Connecticut Office of Policy and Management
450 Capitol Avenue, Hartford CT, 06106

